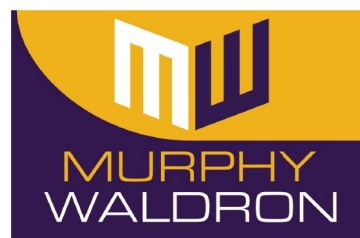


SALES - CONVENYANCING
LETTINGS - PROPERTY MANAGEMENT
PROPERTY SOURCING - MAINTENANCE
MORTGAGES



37 Asgard Drive

Salford, Manchester, M5 3TQ

£1,200 PCM

Murphy Waldron present FOR RENT this TWO BED end quasi-semi detached property.

Welcome to Asgard Drive, a charming house located in the heart of Salford, Manchester. This delightful property boasts a great size reception room, perfect for relaxing after a long day. With two bedrooms, there is ample space for a small family or guests to stay over. There is also an extra study storage room.

The house features a well-maintained bathroom, ideal for your daily routines. You'll appreciate the convenience of off-road parking, ensuring you never have to worry about finding a space after a busy day out.

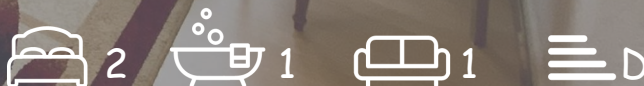
For those who enjoy the outdoors, this property offers gardens at the front, side, and back - a true haven for nature lovers. A gardener is supplied as part of the tenancy to fully maintain these beautiful gardens. The gas central heating provides warmth and comfort throughout the house, making it a welcoming retreat during the colder months.

Situated within walking distance to Manchester City Centre, you'll have easy access to a variety of amenities, restaurants, and entertainment options. Whether you're looking for a peaceful sanctuary or a vibrant city life, this house offers the best of both worlds.

- OFF ROAD PARKING
- GARDENS TO FRONT & REAR - GARDENER SUPPLIED
- GAS CENTRAL HEATING
- DOUBLE GLAZED
- 5 MIN WALK TO MANCHESTER CITY CENTRE
- CLOSE TO ALL AMENITIES

Viewing

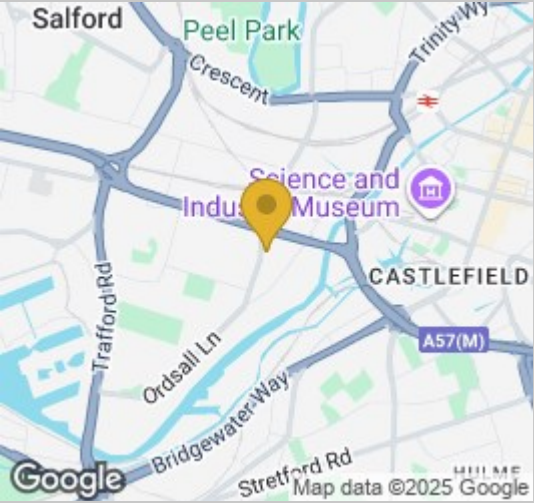
Please contact our Murphy Waldron Estates Office on 0161 787 9195 if you wish to arrange a viewing appointment for this property or require further information.



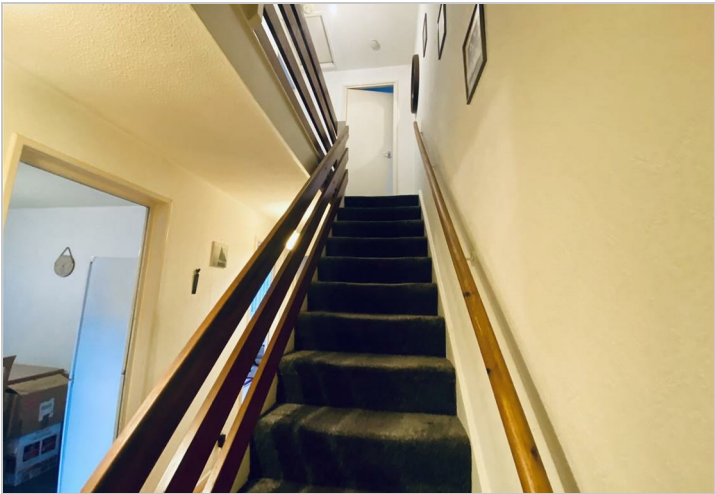
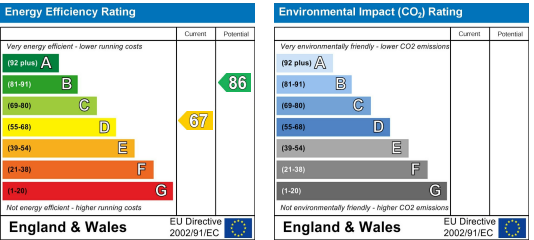
Floor Plan



Area Map



Energy Efficiency Graph



These particulars, whilst believed to be accurate are set out as a general outline only for guidance and do not constitute any part of an offer or contract. Intending purchasers should not rely on them as statements of representation of fact, but must satisfy themselves by inspection or otherwise as to their accuracy. No person in this firms employment has the authority to make or give any representation or warranty in respect of the property.

Murphy Waldron Estates Ltd, 197 Eccles Old Road, Salford. M6 8HA Tel: 0161 787 9195 Web: www.murphy-waldron.com

Murphy Waldron is a trading name of Murphy Waldron Estates Limited & MMW Homes Ltd, registered numbers: 10558754 & 10944199
Registered Office: Ground Floor, 4 Broadgate, Broadway Business Park, Chadderton, Greater Manchester OL9 9XA
MANAGING DIRECTOR: MARIAN WALDRON B.A. HONS